

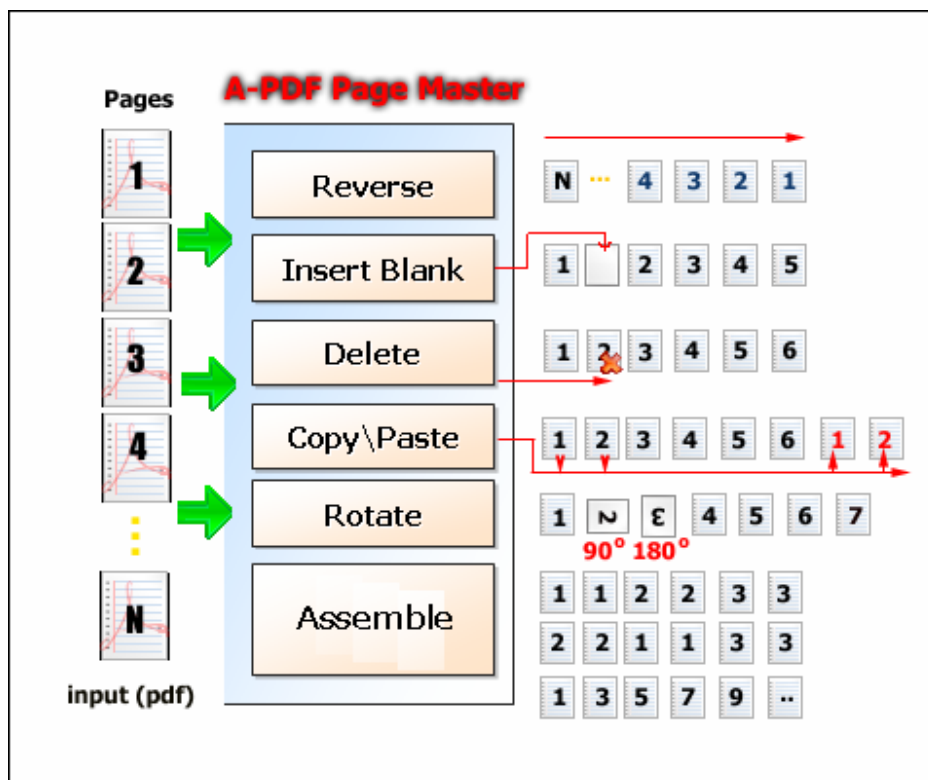
Note: This product is distributed on a 'try-before-you-buy' basis. All features described in this documentation are enabled. The registered version does not insert a watermark in your generated pdf documents.

About A-PDF Page Master

A-PDF Page Master is a simple, lightning-fast desktop utility program that lets you modify and assembly (Organizing PDF Pages) you PDF document Pages, include supporting PDF:

1. **Page Editing:** including cutting/pasting, cloning, deleting, inserting blank pages, rotating, resizing.
2. **Page Arranging:** including changing page order, reversing, assembling, etc.
3. **Page Extracting:** Extract single pages or a group of pages from a PDF file.

A-PDF Page Master gives you a complete set of tools for editing, assembling and rearranging the pages in PDF files, including tools to insert, clone, extract, replace, delete, rotate, and reorder pages. You can work more visually with pages in a PDF, you can use the left pages pane to view the lists of all pages and from there you can select pages directly and perform edits to them.



The complete set of page editing features includes tools to:

- Insert and delete PDF pages
- Clone PDF pages
- Extract and replace PDF pages
- Resize pages
- Rotate PDF pages
- Reorder, move, or rearrange PDF pages
- Assembly PDF pages

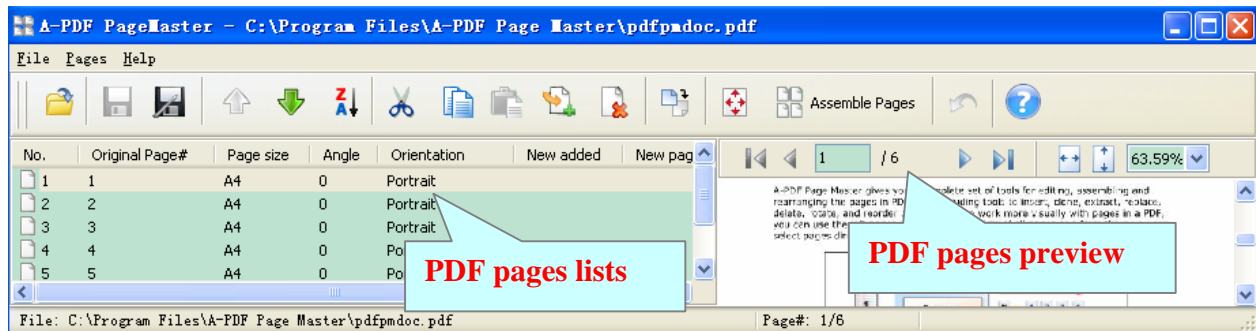
A-PDF Page Master does NOT require Adobe Acrobat, and produces documents compatible with Adobe Acrobat Reader Version 5 and above.

Using A-PDF Page Master

A-PDF Page Master can be started either by launching the application via a desktop shortcut, or directly from within Windows/Windows Explorer.



When you start the program, you will be presented with the primary screen from which all actions are taken.




Open PDF Document

Clicking the **Open** icon , or selecting **File** then choosing **Open** will open the standard file browse and select window. From that window you can navigate to the folder and find the PDF you want to open

Opened PDF pages are displayed in the A-PDF Page Master left window (**PDF pages lists**): as seen in the example blew. You can view any of the pages in the window by 'clicking' them. That will display in right **PDF pages preview** window.



| No. | Origin page# | Page size | Angle | Orientation | New added |
|-----|--------------|-----------|-------|-------------|-----------|
| 1 | 1 | A4 | 0 | portait | |
| 2 | 2 | A4 | 90 | landscape | |
| 3 | 3 | A4 | 0 | portait | |
| 4 | 4 | A4 | 0 | portait | |
| 5 | 5 | A4 | 90 | landscape | |
| 6 | 6 | A4 | 0 | portait | |

Save PDF File


After finished the page editing, you can save the file using the **Save** icon . If it is saved first, the original PDF file will be backup with name added a extension .bak.

Pages Editing



◆ Reorder pages

You can select an or multiple pages in the **PDF pages lists**, then click the **Move up** icon  to move selected page(s) to previous position; click the **Move down** icon  to move selected page (s) to next position.


◆ Reverse

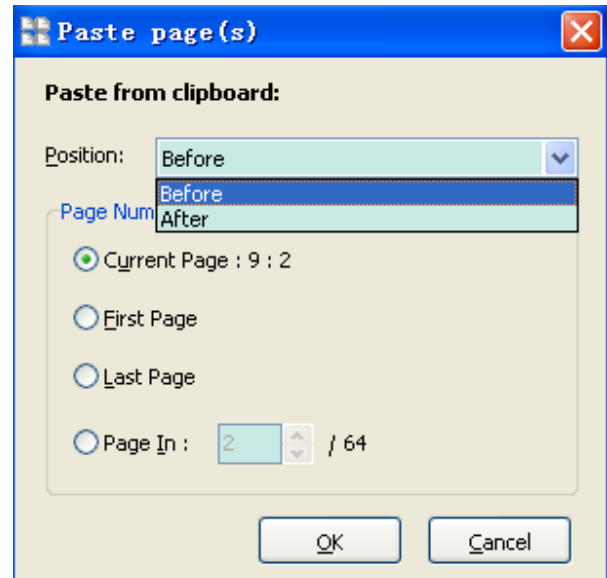
IF you want to reverse pages in the **PDF pages lists**, you can click the **reverse** icon  then the order of pages in the **PDF pages lists** will be reversed.

◆ Clone PDF pages

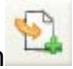
Selecting an or multiple pages in the **PDF pages lists**, then click the **Copy** icon  to copy selected pages to Clipboard, then click the **Paste** icon  to clone copied page(s).

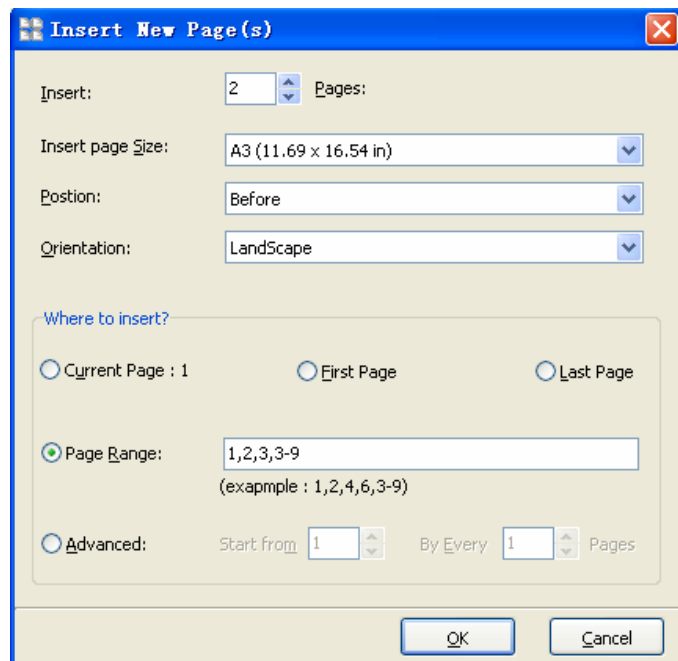
◆ Clone PDF pages to Special position

Selecting an or multiple pages in the **PDF pages lists**, then click the **Copy** icon  to copy selected pages to Clipboard, Selecting **Pages** menu then choosing **Paste To...** will open a **Paste page(s) windows** as right , in the **Paste page(s) windows**, you can clone copied page(s). In special position, such as current page, first page, last page, page in page#




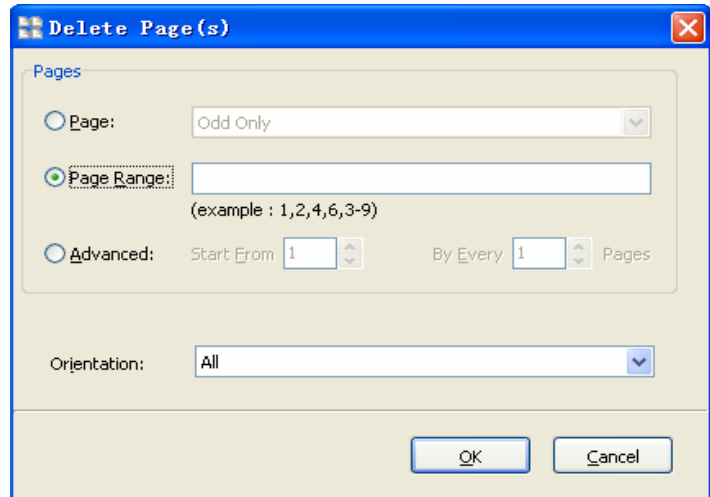
◆ Insert Blank pages

Clicking the **Insert** icon , will open an **Insert new page(s) window** display as right, In the **Insert new page(s) window** you can select the position where the new blank pages will be inserted, such as you can set the inserted copies of blank pages, defining the inserted pages size (e.g. A3, A4, A5, Letter etc.) , Setting insert position (Before or after insert), Page Orientation (Portrait, Landscape), **option** where to insert to insert blank pages in current page, first page, last page, page range (example 1,2,4-5, means insert blank page in page# 1,2,4,5), Select advanced option (means inserting page(s) start form page# X by every Y pages)




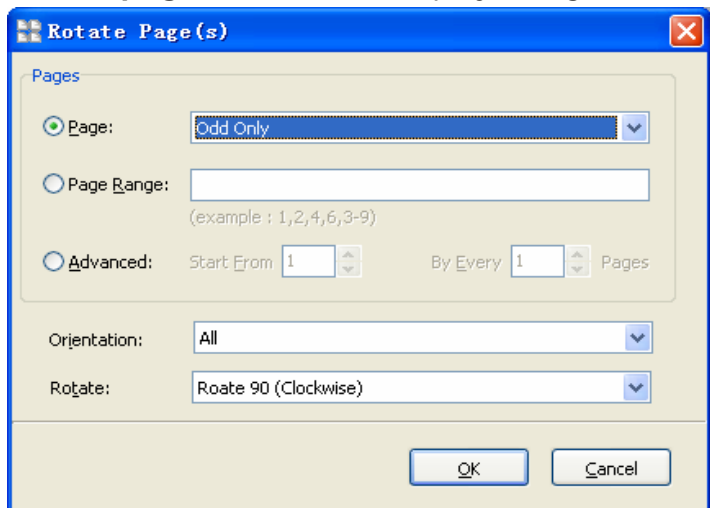
◆ Delete pages

Clicking the **delete** icon , will open a **delete page(s) window** display as right, In the **delete page(s) window** you can delete selected page(s) , deleting Odd page(s) or even page(s), you also can delete special page(s) by selecting page range option (example 1,2,4-5, means delete page witch page# are 1,2,4,5), selecting advanced option means deleting special page(s) start form page# X by every Y pages)



◆ Rotate pages

Clicking the **Rotate** icon , will open a **rotate page(s) window** display as right, In the **rotate page(s) window** you can rotate selected page(s) , rotating odd page(s) or even page(s), you also can rotate special page(s) by selecting page range option (example 1,2,4-5, means rotate page witch page# are 1,2,4,5), selecting advanced option means rotating special page(s) start form page# X by every Y pages), setting the Page Orientation filter (Portrait, Landscape) to rotate, setting rotate angle(Rotate 90 (Clockwise), Rotate -90 (Counter-Clockwise),180)



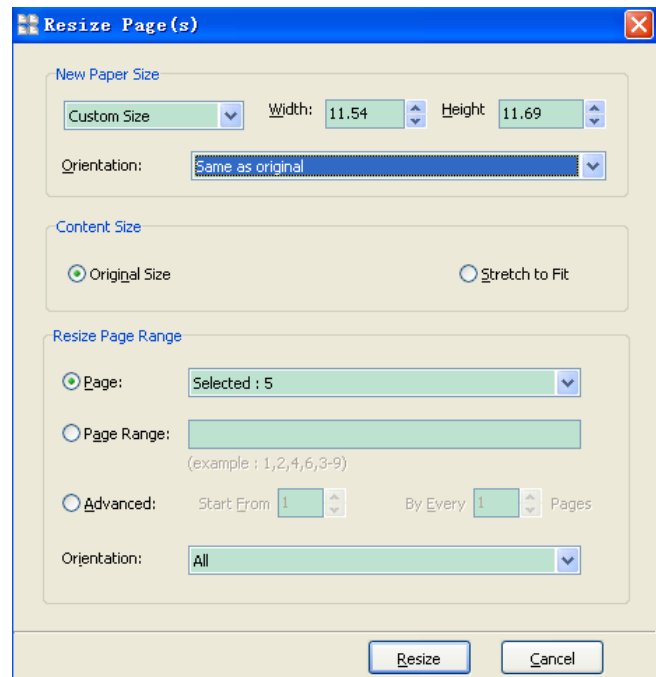
◆ Resize pages

Resize pages allows the user to change the original paper size for the selected pages in the active document. The user can select a New Paper Size, by specifying the desired dimensions in the New Paper Size area of the Resize Pages dialog.



Clicking the **Resize** icon will open a **resize page(s) window** display as right. In the **resize page(s) window** you can define new paper size, you can **resize** selected page(s), resizing odd page(s) or even page(s), you also can resize special page(s) by selecting page range option (example 1,2,4-5, means resized page with page# are 1,2,4,5), selecting advanced option means

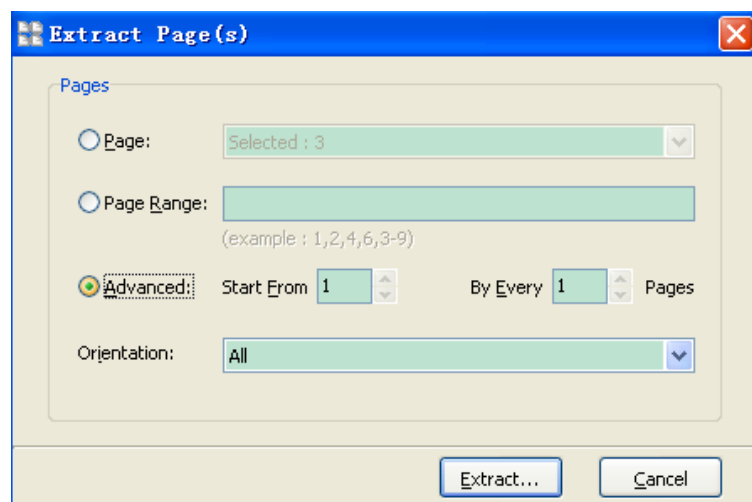
resizing special page(s) start from page# X by every Y pages), The Orientation drop down menu offers three choices. **Auto** – applies the selected page width and height; **Portrait** – results in making the page height always greater than the width, no matter what page type is selected; **Landscape** – results in making the page width always greater than the height, no matter what page type is selected.



◆ Extract pages


The Extract Pages command enables the user to create a new file from the active PDF document in the PDF Page Master.

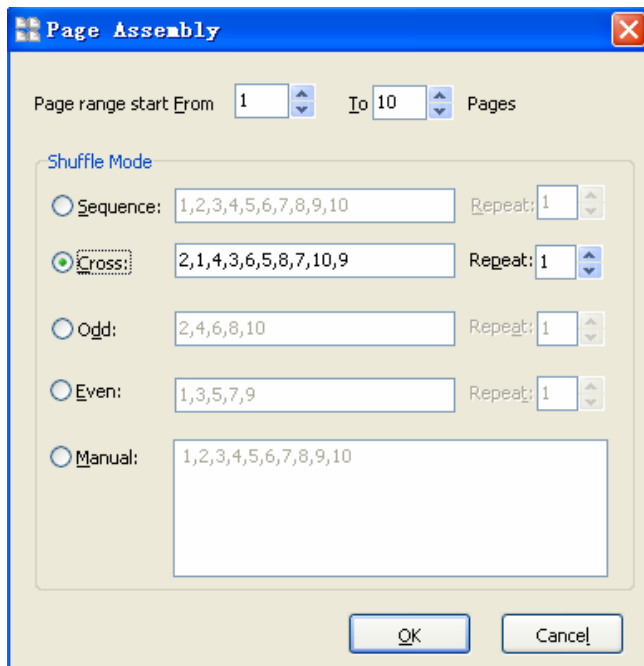
The page range options for this dialog allow the user to specify whether to extract the current page, all pages, a page range, or specific pages within the active PDF document.



Pages Assemble

A-PDF Page Master can assembly PDF pages to reach your special needs, clicking the

Page Assembly... icon  **Page Assembly**, will open a **Page Assembly window** display as blew, In the **Page Assembly window** you can



Set Assembly mode to decide how to rearranging pages:

Sequence: rearranging by Sequence, the repeat value means copies.

Cross: Rearranging by odd and even pages cross.

Odd: rearranging by odd page, even pages will be discard.

Even: rearranging by even page, Odd pages will be discard.

Manual: rearranging by user defined sequence

Ending Your Session

When you have completed your work, choose the File option and select Exit from the dropdown list.

For more information: <http://www.a-pdf.com>