



Note: This product is distributed on a 'try-before-you-buy' basis. All features described in this documentation are enabled. The registered version does not insert a watermark in your generated pdf documents.

About A-PDF Scan Optimizer

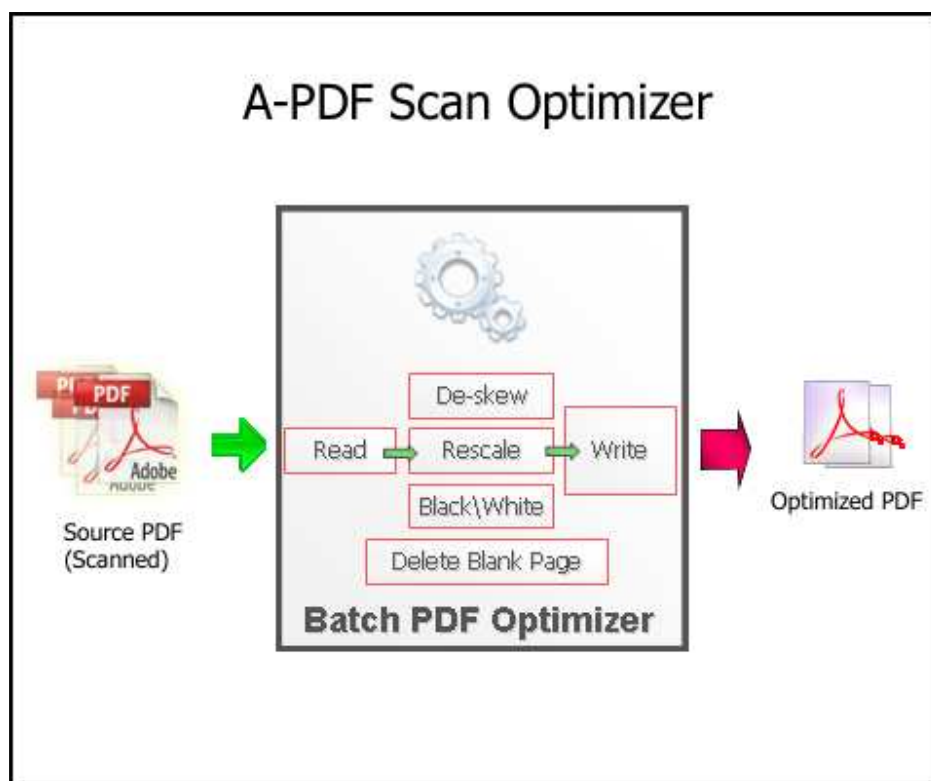
A-PDF Scan Optimizer provides a quick way to batch optimize your scanned PDF documents, A-PDF Scan Optimizer can correct the skew scanned image within PDF; convert the scanned image to Black/White or gray in Acrobat PDF; resample the image in PDF and delete unused blank page in PDF directly.

A-PDF Scan Optimizer's features include processing a batch of PDF file, even working with password protected files; filtering small images which may be a logo or else; reduce PDF file size; and dealing out some page only to speed the processing, from your PDF files, it makes the most compact, fast web view PDF files on the fly.

A-PDF Scan Optimizer does NOT require Adobe Acrobat, and produces documents compatible with Adobe Acrobat Reader Version 5 and above.



A-PDF Scan Optimizer works only with the scanned text-print PDF file. Other image such a picture or photo may be caused error.





Sample: De-skew image in PDF



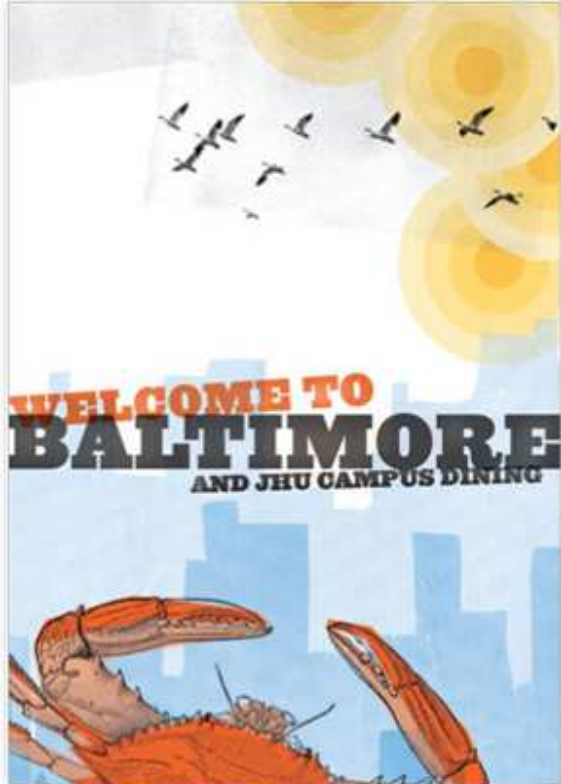
Before



After



Sample: Black/White (Threshold) Mode



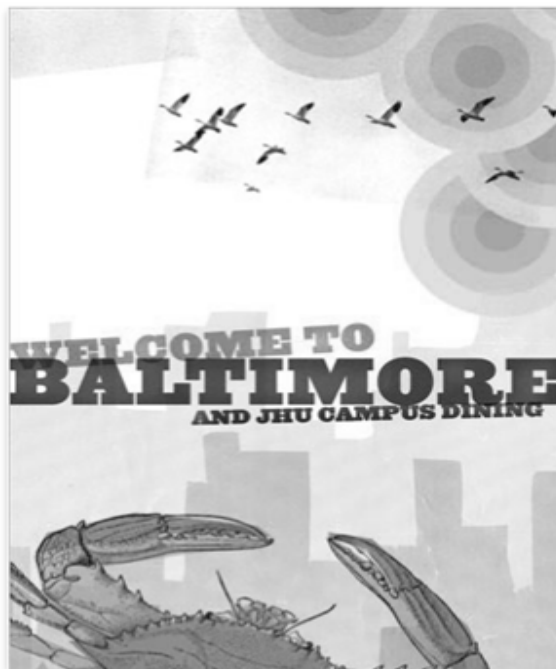
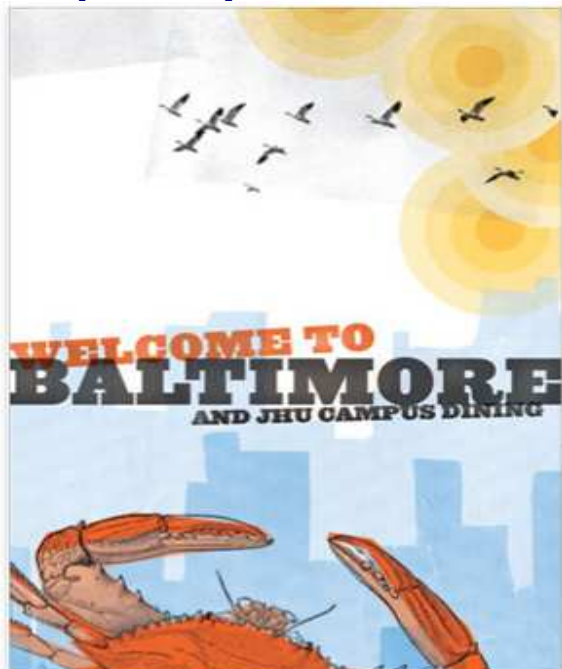
Before



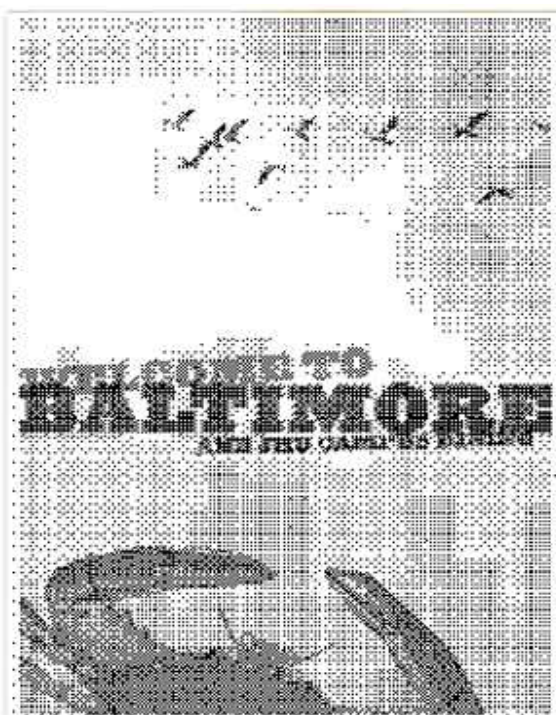
After



Sample: Grayscale Mode



B/W (Ordered) Mode





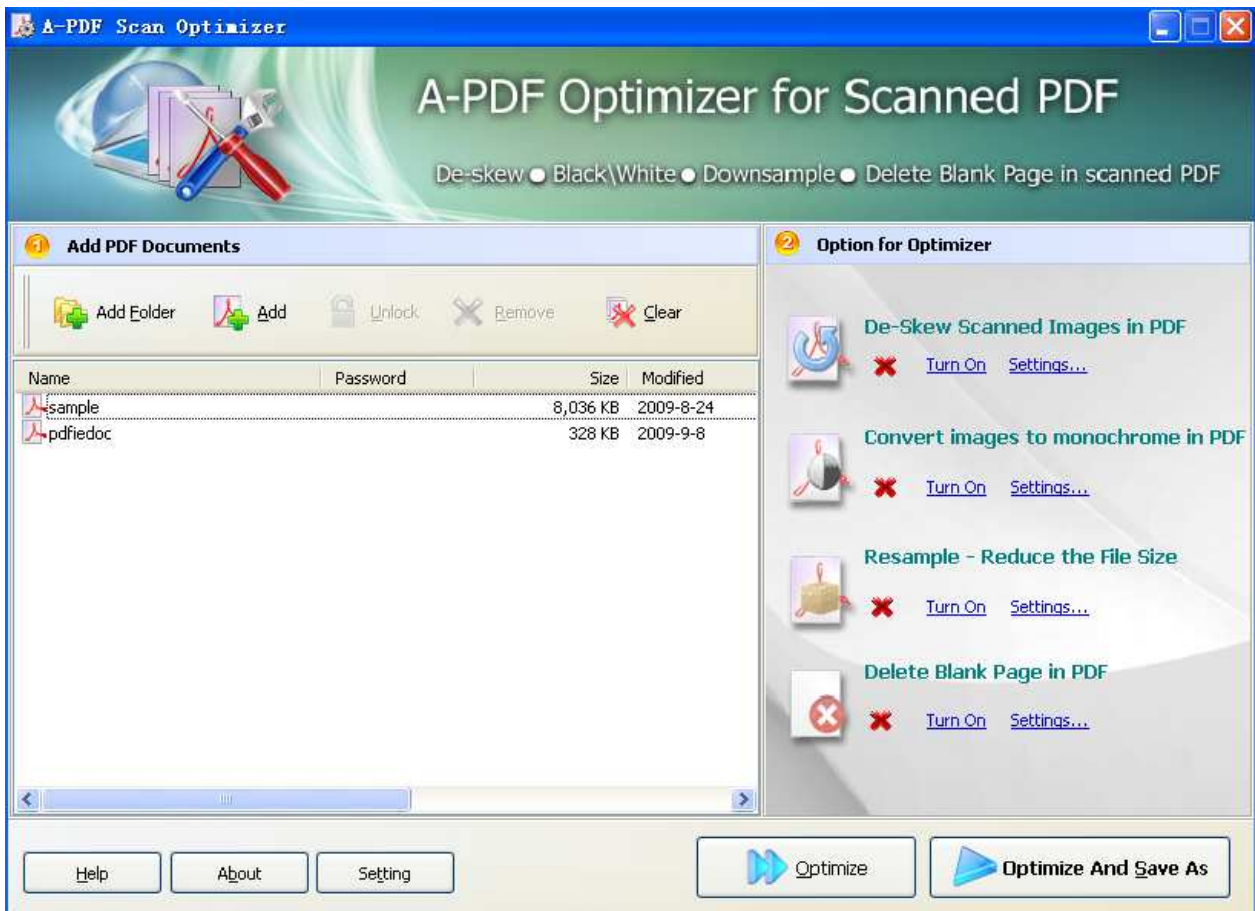
Using A-PDF Scan Optimizer

A-PDF Scan Optimizer can be started either by launching the application via a desktop shortcut, or


directly from within Windows/Windows Explorer.



When you start the program, you will be presented with the primary screen from.




Selecting Files

Clicking the **Add** icon  then will open the standard file browse and select window. From that window you can navigate to the folder and find the files you want to add to the list of files to be worked.

Alternatively, if you are using Windows Explorer to locate files, you have the convenience of being able to 'drag and drop' files into the document window.





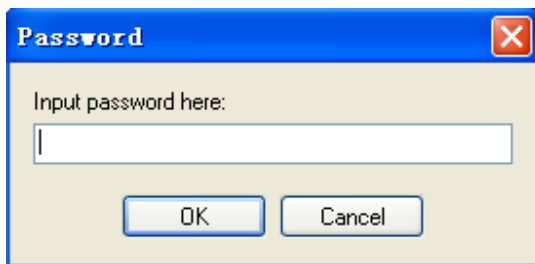
A-PDF Scan Optimizer even allows you to select all files in a particular directory/folder by using the **Add Folder**  button! Adding a directory also supports sub-folders.



Each added file is displayed in the document list window. You can view any of the files in the window by 'double-clicking' them. That will open pdf files in your default pdf reader program (usually Adobe Reader).



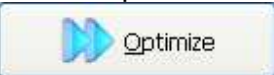
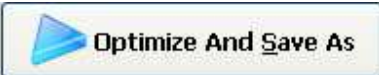
If any of the files you want to work with are password-protected (security may be set within Adobe Acrobat for Read and other permissions), then before Optimizing PDF files, you need to provide the file password(s).

Files that contain passwords show a lock icon  in left. Click the file name and the **Password** icon  becomes active. Then clicking the **Password** icon produces an input box for each password required.



You can click the **Remove** icon  to remove selected files in list or you can clear all PDFs by clicking the **Clear** icon .

Optimizer PDF Documents

Click the **Optimize** icon to Optimize all of PDF files in the document windows. The Original PDFs will be overwritten.  

Click the **Optimizer And Save as** icon to Optimize all of PDF files in the document windows and save the resultant file to a directory which you selected.

Options


Set Optimizer options by click the **Settings**  button icon.

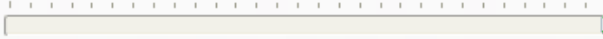



Options-Deskew

De-Skew **BW** Resample Delete Blank General

Apply Deskewing image(s) in PDF:

 Angle Range: 30

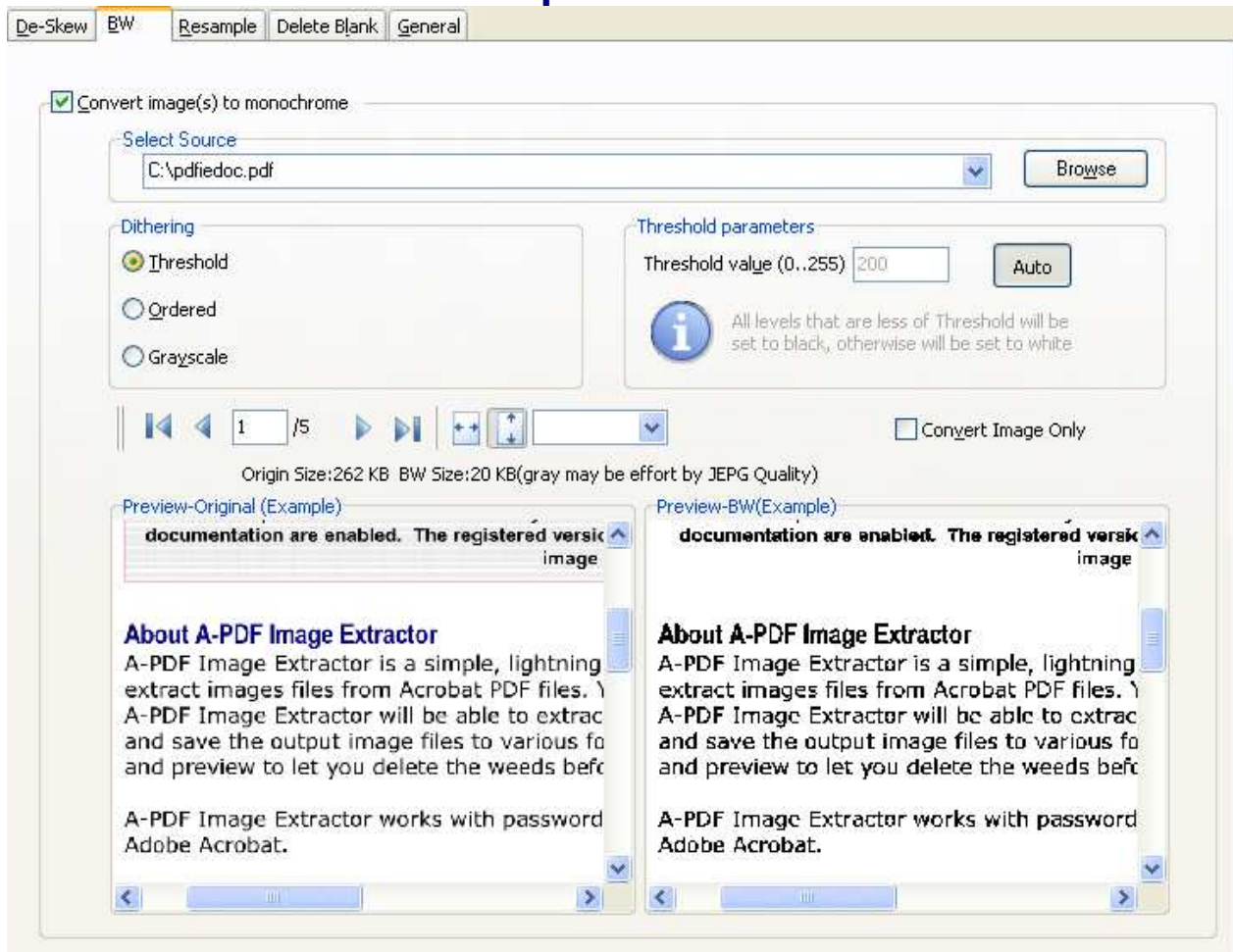
0  30

 Angle Range specifies the working range in degrees. Low values enhance performance and accuracy. For example specifying 30 application will scan the image searching for pixels inside a range of -15 to 15 degrees. Angle Range can be from 1 to 30.

Angle Range: Specify the working (Optimization) range in degrees. Low values enhance performance. For example, specifying 30 Skew will scan the image searching for pixels inside a range of -15 to 15 degrees. Angle Range can be from 1 to 90.



Options-BW



B/W Adjustment effect: set the image B/W effect, such as grayscale; convert to Black and White image etc... Then all PDF scanned images will be applied the effect option before been converted.



Options-Resample

De-Skew BW **Resample** Delete Blank General

Resample image(s) in PDF

By DPI
 By Scale
 By Width and Height

Max Dpi:
Percent for Scale : %
Max Width: Max Height:
ResampleFilter:

ResampleFilter
If you need the best quality we suggest: rfHermite, rfBell, rfBSpline, rfLanczos3, rfMitchell, rfNearest, rfBilinear, rfBicubic
If you need speed we suggest: rfTriangle, rfLinear, rfFastLinear
For projects (white on black or black on white) we suggest: rfProjectBW and rfProjectWB

By DPI: All images in PDF will be resample to the specified DPI(Max DPI), if the source image less Max DPI, will be Ignored.

By Scale: All images in PDF will be scale to the specified percent of full scale.

By Width and Height: Images width and height Less then specific size values will not be resampled

Ending Your Session

When you have completed your work, choose the File option and select Exit from the dropdown list.

For more information: <http://www.a-pdf.com>