



**Note: This product is distributed on a 'try-before-you-buy' basis. All features described in this documentation are enabled. The registered version does not insert a watermark in your generated pdf documents.**

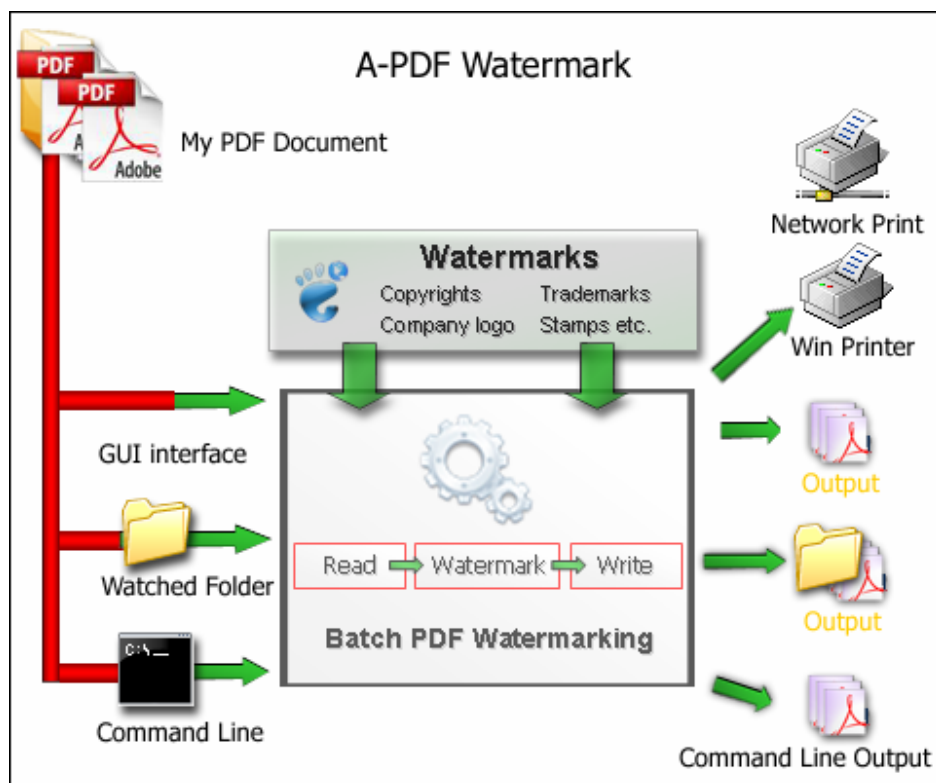
## About A-PDF Watermark

A-PDF Watermark is a fast desktop utility program that lets you add images, texts, shape, and PDF (style) watermark to a batch of Acrobat PDF documents.

With A-PDF Watermark, you can create, edit and manage the text, image, shape, PDF watermark. Text watermark support either static or dynamic text, with dynamic text, you can use PDF file name, metadata information, and date time as the watermark. Image watermark supports almost all of image formats includes TIFF, JPEG, JPEG 2000, GIF, BMP, PNG, ICO, WMF, EMF etc. You can create watermark using company logos, letter header, signatures, product pictures or any artwork in image formats.

A-PDF Watermark features include adding manipulate watermarks in manipulate PDF files once; placing watermark in fixed position or tile, on top or bottom of content; making watermark rotation and transparency. Support hot directory monitor. A command line version is included also.

A-PDF Watermark does NOT require Adobe Acrobat, and produces documents compatible with Adobe Acrobat Reader Version 5 and above.



## A-PDF Watermark Feature List

- Support text, image, shape, PDF watermark
- Support text watermark with macro (dynamic text)
- Support image watermark with various image formats (eg. JPEG, GIF, TIF, TIFF, PCX, PNG, TGA, ICO, BMP, JP2 image formats)
- Support shape watermark with various shape types (e.g. Line, Rectangle, Circle)
- Support PDF watermark, Can create watermark from PDF content
- Support watermark to any position in the page, includes header, center and footer
- Using margins, watermark can be placed in the exact position or tile to pages.
- Rotate watermark in any angle
- Support opacity (transparent watermark) for text and images
- Support standard font and true type font, font size, text color, text style
- Support true type font embedded or not
- Support set pages to be added current watermarks only on by selecting a predefined range
- Watermark can be place on top or background of page
- Batch adding watermark
- Support hot directory monitor.



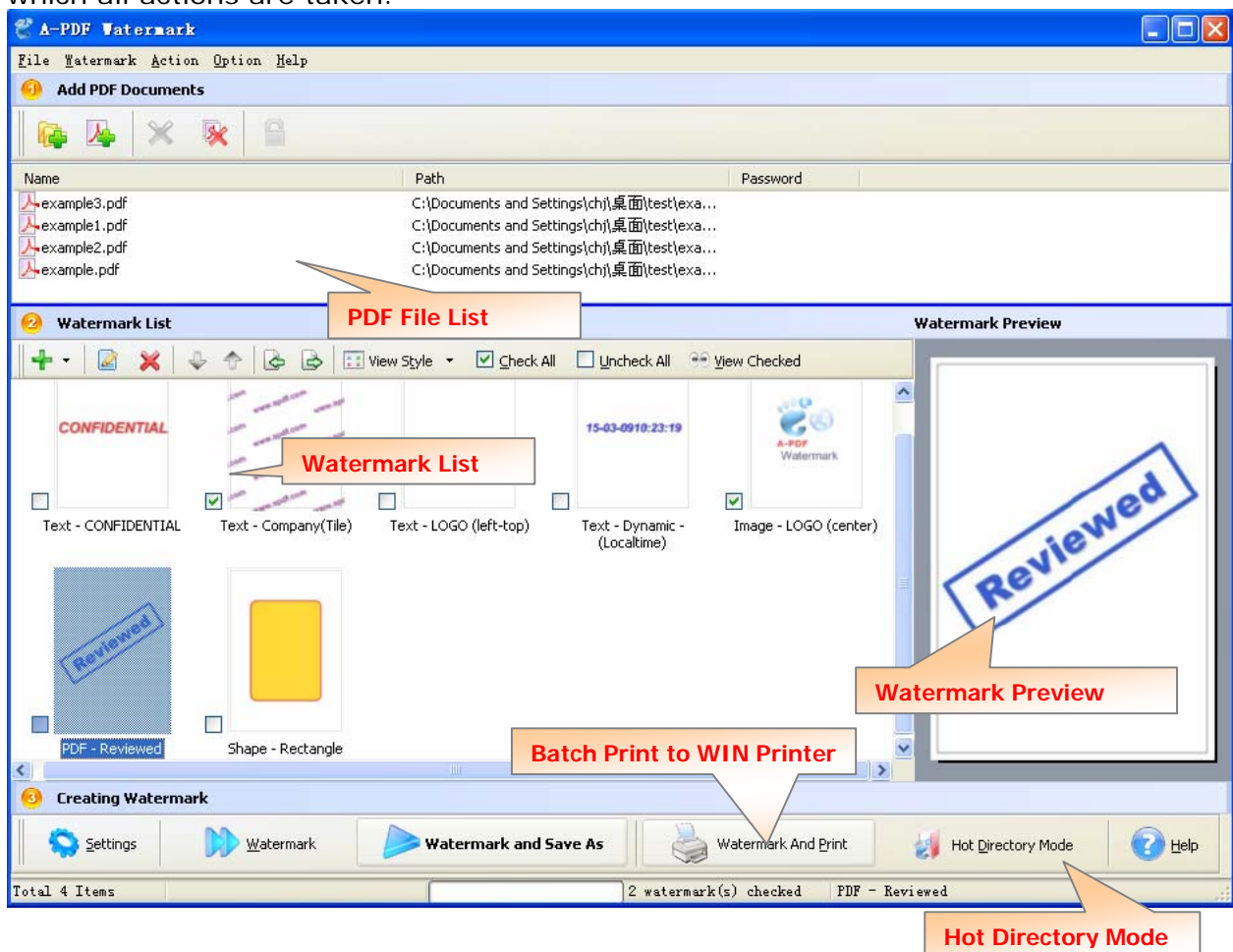
- Adding manipulate watermark to one PDF file
- Allow adding part of pages, e.g. page range, odd page etc
- Backup original PDF file when adding watermark
- Support batch print PDF(s) document with watermark to any printer device that is accessible through the Windows operating system
- Export and import watermarks
- Support Transparent color Watermark
- Support create dynamic Datetime watermark

## Using A-PDF Watermark

A-PDF Watermark can be started either by launching the application via a desktop shortcut, or directly from within Windows/Windows Explorer.



When you start the program, you will be presented with the primary screen from which all actions are taken.





## Using A-PDF Watermark in command line

A-PDF Watermark can be used in command line also.

### Usage:

```
PWMCMD.exe <input file> [-S<password>] <watermark name|watermark file> [-O<output dir>]
```

### Return code:


```
0: Success
2: Input file does not exist
3: Load Input file failed
4: Output file path not exists
5: Some watermark not found
6: No watermark list
7: Create Output file failed
8: Load watermark list fail
```

### Example:

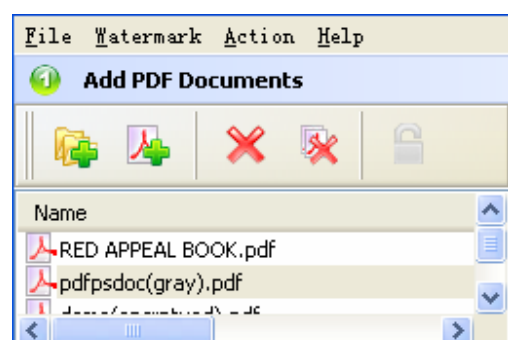
```
1. PWMCMD.exe "c:\help.ppt" "Text - CONFIDENTIAL" -o"c:\output\"
2. PWMCMD.exe "c:\help.ppt" -s"123" "Text - CONFIDENTIAL" -o"c:\output\"
```

MEMO: "Text - CONFIDENTIAL" is a watermark item defined by **A-PDF Watermark GUI**(PDFWM.exe), you can display all watermark items by Using Command:  
**PWMCmd.exe -list**


## Selecting PDF File

Clicking the **Add PDF Document** icon , or selecting **File** then choosing **Add PDF Document** will open the standard file browse and select window. From that window you can navigate to the folder and find the files you want to add to the list of files to be watermarked.

Alternatively, if you are using Windows Explorer to locate files, you have the convenience of being able to 'drag and drop' files into the document window.







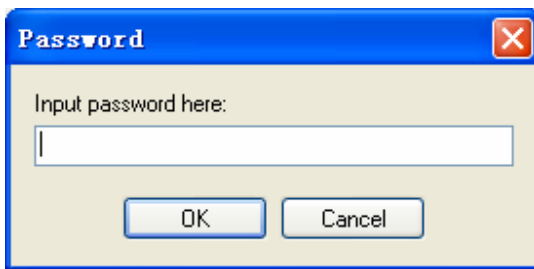
A-PDF Watermark even allows you to select all files in a particular directory/folder by using the **Add a Directory**  option from the **File** menu! Add a directory also supports sub-folders.

Each added file is displayed in the PDF File List window, as seen in the example below. You can view any of the files in the window by 'double-clicking' them. That will open pdf files in your default pdf reader program (usually Adobe Reader).



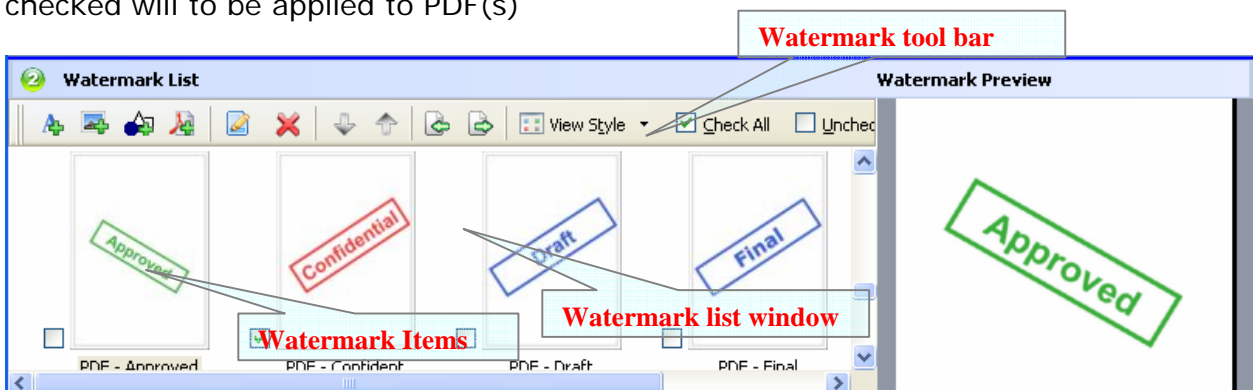
If any of the files you want to add watermark are password-protected (security may be set within Adobe Acrobat for Read and other permissions), then before Adding Watermark to PDF files you need to provide the file password(s).

Files that contain passwords show a lock icon  in left. Click the file name and the **Password** icon  becomes active. Then clicking the **Password** icon produces an input box for each password required.

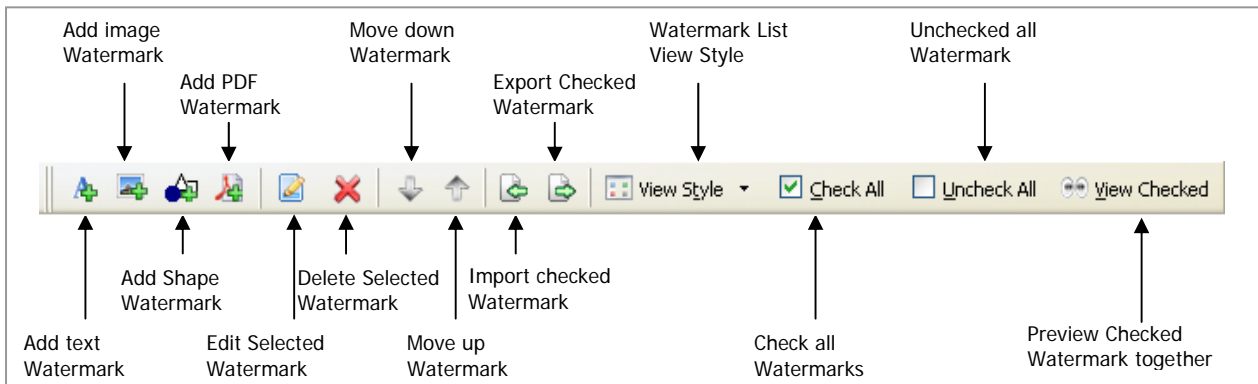


## Applying Watermark


The watermarks for applying to PDF(s) are listed in the Watermark list, where you can find text and image Watermark items list in here, You can apply watermark by marking one or multiple Watermark items checked, The watermark items which checked will to be applied to PDF(s)




## Watermark tool bar function



### Adding Watermark to PDF


Click the **Watermark**  button to create watermark on all of PDF files in the document windows. The watermark items selected will be added to PDF files, The Original PDFs will be overwritten.

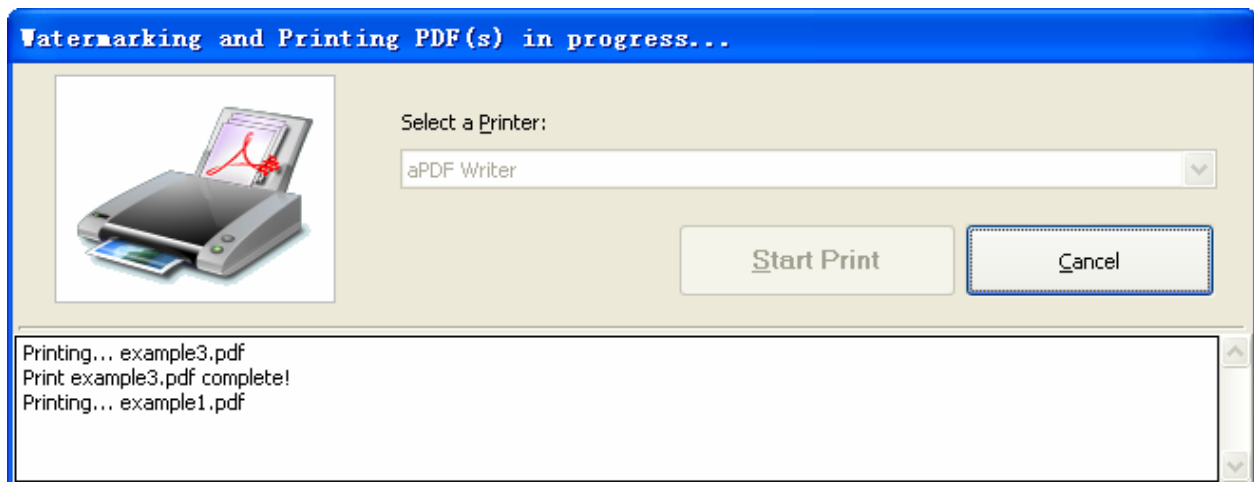
Click the **Watermark And Save as** icon  to create watermark on all of PDF files in the document windows and save the resultant file to a directory which you selected.

Watermark Name	Type
<input checked="" type="checkbox"/> A Text - FINAL	Text
<input type="checkbox"/> A Text - COMPLETED	Text
<input type="checkbox"/> A Text - DRAFT	Text


**Checked watermark**

### Print PDF With Watermark

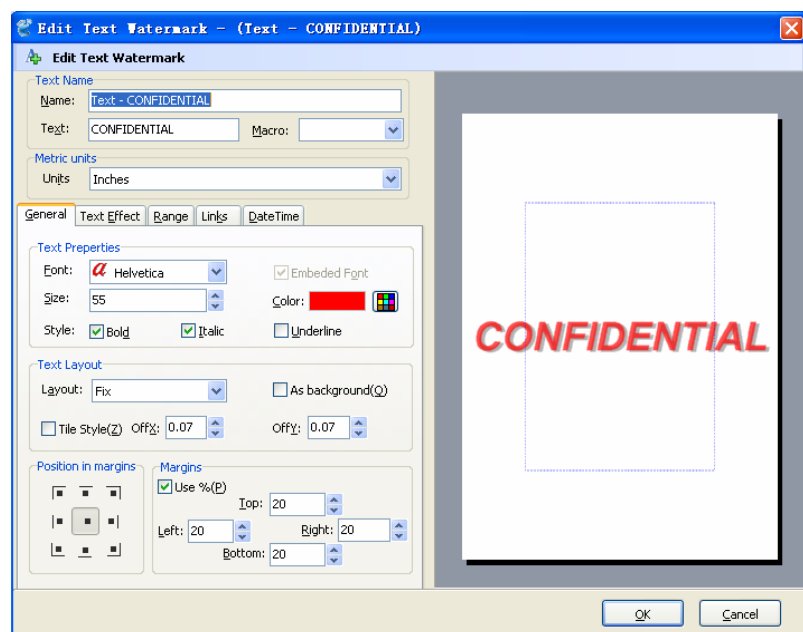
A-PDF Watermark allows you to print PDF(s) documents to any printer device that is accessible through the Windows operating system. Click the **Watermark And Print** icon  to open a print window, Select a available printer in there, and then click **Start Print** button, A-PDF Watermark will create watermark on all of PDF files in the document windows and batch print them in order automatically.



## Create Text Watermark

In Watermark list window, Click the icon  to open the **New Text Watermark** configuration window. You can configure the text watermark properties here. Once you set the desired options for the text watermark, you can click OK to save it, Options that you can set:

**Name** - you can enter a name for the watermark (note this is not the text that will appear in the pdf, it's used only in the list of available watermarks that you see on the Watermarks list and must be a unique name).



**Text** - the text you enter here is actually the text that will appear as the PDF watermark. You can use macro to specify dynamic text, either select from the Macro list or input directly. As you type you will see in the Preview section how the watermark looks.

**Text properties** - You can select the type of the font (in the Font section), color, style (bold, italic, underline) and size of the text. If the font is true type, you have choice to embed the font or not.



**Text Layout** - If the Fit to margins options is selected the size of the font will be automatically adjusted to fit in the limits of the page margins. If the **As background** option is not checked, the text watermark will be placed on top of the content that currently exists in the document, otherwise it will be placed under the existing content. You can place the text to a fix position or tile in pages by check or uncheck **Tile style** option. **Offx** means x-offset, **Offy** means y-offset. **Position** and **Margin** helps you to adjust the position of text watermark. The margin can use either inch/millimeter or percent as unit.

**Text Effect** –In Text Effect tab, you can choose a rotation angle if you want the text to be rotated (Rotation, values accepted between 0 and 360) and set an Opacity value so that the text is transparence (values from 0 to 100). 0 means invisible, 100 means visible solid.

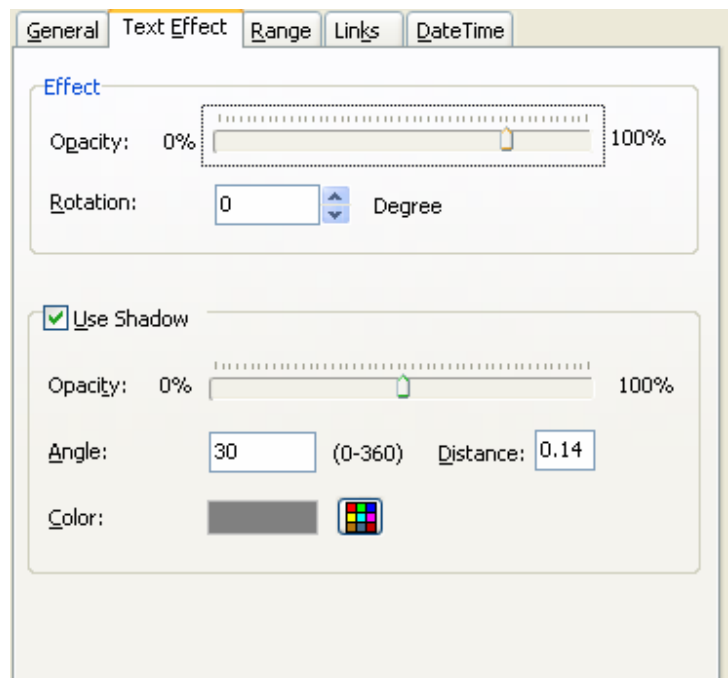
You can set a text shadow properties, properties including:

**Opacity:** To set the text shadow transparence, transparence (values from 0 to 100). 0 means invisible, 100 means visible solid.

**Color:** text shadow color, to set the color of the shadow, default color is gray

**Angle:** To set the angle of the shadow

**Distance:** To set the distance of the shadow from the object



**Range:** Set pages to be added current watermarks on by selecting a predefined range. It applies to current watermark only

**Preview** - in this section you will be able to see how the text watermark will be displayed in the PDF file.

Now the text watermark has been defined and saved, it will be shown in the **Watermarks list window**.

**Link:** allow you to add link to current watermark, the link action include Url, Go to page and go to remote PDF page type link

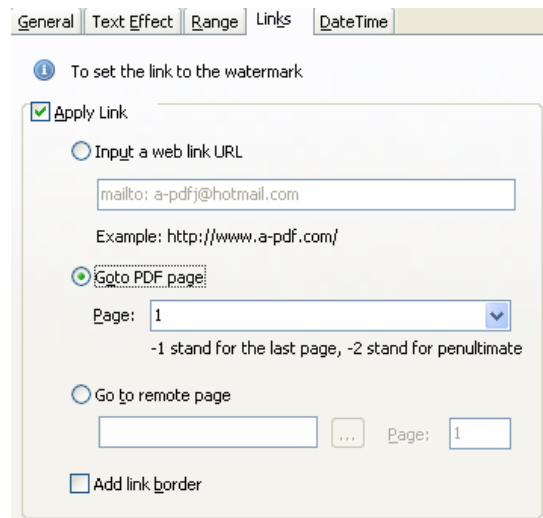





**Url type Link:** the link can be Web Url (such as "http://www.a-pdf.com"); can be Email (such as "mailto: tech@a-pdf.com"); can be FTP (such as "Ftp://www.a-pdf.com/");

**Go to PDF page type link:** the link can navigate you to the special page number in the current PDF

**Go to Remote PDF page type link:** the link can navigate you to the special page number from outside PDF file



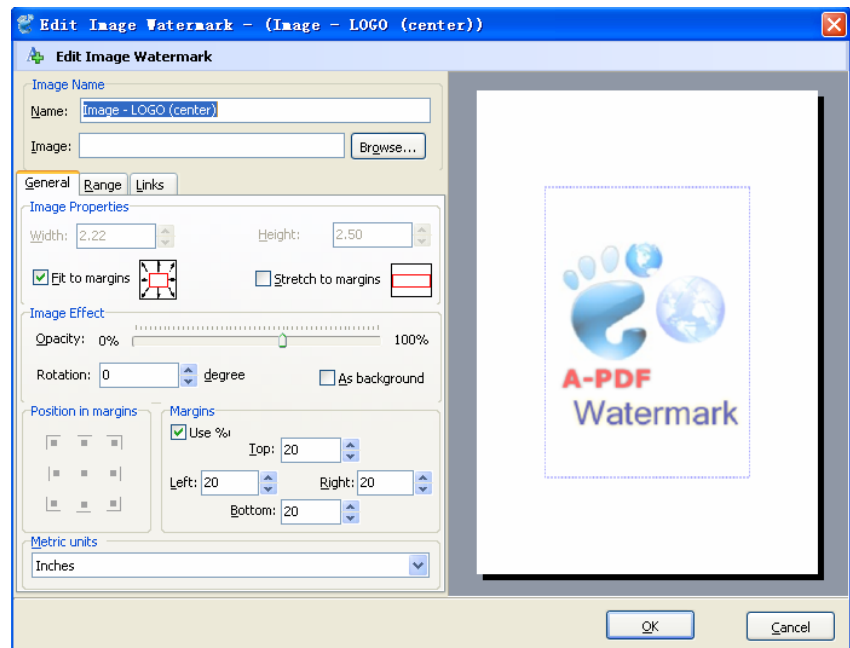
## Create Image Watermark

In Watermark list window, click the icon  to open the **New Image Watermark** configuration window. In here you can configure the image watermark properties. Once you set the desired options for the image watermark, you can click OK to save it, Options that you can set:

**Name** - you can enter a name for the image watermark.

**Image** - You can browse and choose an image that will be used as the watermark. Image formats that can be recognized: .BMP, .GIF, .ICO, .JPG, .TIF, .JPEG, .JPE, .PBM, .PCX, .PNG, .PPM, .PSD, .TGA, .TGA etc. After you click ok you will see it in the Preview section.

**Image properties and margins** - by default the **Fit to margin** are checked. The **Fit to margins** option will adjust automatically the image to fit in the limits of the page margins. If you uncheck the **Fit to margins** option you can enter custom dimensions for your image (units for the dimensions are those selected in the Units drop-down





includes inches, millimeters or points) and the image will be automatically adjusted as seen in the Preview section. The **Stretch to margins** option will adjust automatically the image to stretch in the limits of the page margins

**Image Effect** - Using options in this section you can choose a rotation angle if you want the image to be rotated (Rotation, values accepted between 0 and 360) or set an Opacity value so that the image is not fully visible (values from 0 to 100).

**Transparent color:** If you check the transparent color option you can select a specific color from your image to be transparent when the image watermark is added to the PDF file.

**Range:** Set pages to be added current watermarks on by selecting a predefined range. It applies to current watermark only

**Preview** - in this section you will be able to see how the image watermark will be displayed in the PDF file.

**Link:** see description for text watermark link above

Now the image watermark has been defined and saved. It will be shown in the **Watermarks list window**.

## Create PDF (Style) Watermark

In Watermark list window, click the icon

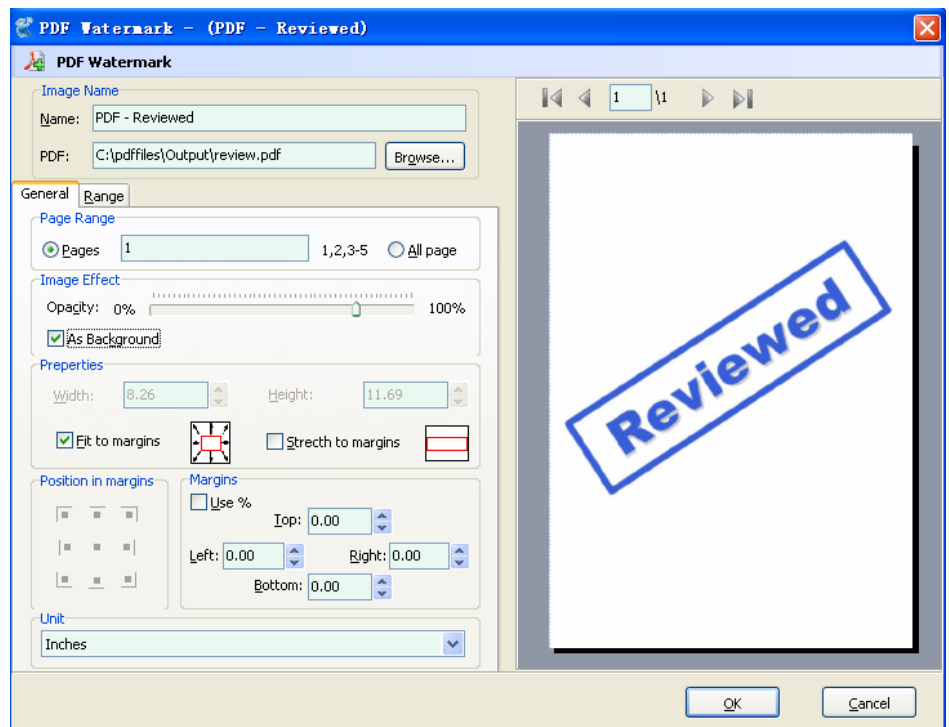


to open the **New PDF Watermark** configuration window.

In here you can create watermark from PDF. Once you set the desired options for the PDF watermark, you can click OK to save it, Options that you can set:

**Name** - you can enter a name for the PDF watermark.

**PDF** - You can browse and choose a PDF





document that will be used. After you click **Ok** you will see it in the Preview section.

**PDF properties and margins** - by default the **Fit to margin** are checked. The **Fit to margins** option will adjust automatically the PDF Content to fit in the limits of the page margins. If you uncheck the **Fit to margins** option you can enter custom dimensions for your PDF Content (units for the dimensions are those selected in the Units drop-down includes inches, millimeters or points) and the image will be automatically adjusted as seen in the Preview section. The **Stretch to margins** option will adjust automatically the PDF Content to stretch in the limits of the page margins

**Page Range** - in this section you will be able to decide which PDF Page will be stted as pdf watermark


**Image Effect** - Using options in this section you can choose set an Opacity value so that the PDF watermark is transparence (values from 0 to 100). 0 means invisible, 100 means visible solid. If the **As background** option is not checked, the PDF watermark will be placed on top of the content that currently exists in the document, otherwise it will be placed under the existing content

**Range:** Set pages to be added current watermarks on by selecting a predefined range. It applies to current watermark only

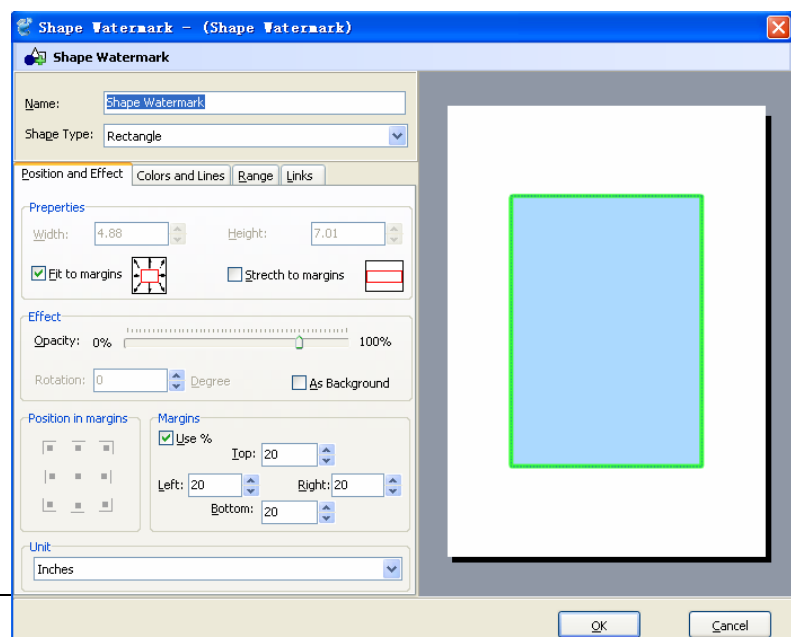
**Preview** - in this section you will be able to see how the PDF watermark will be displayed in the PDF file.

Now the PDF watermark has been defined and saved. It will be shown in the **Watermarks list window**.

## Create Shape Watermark

In Watermark list window, click the icon  to open the **New Shape Watermark** configuration window. You can configure the shape style watermark properties here. Once you set the desired options for the shape watermark, you can click **OK** to save it, Options that you can set:

**Name** - you can enter a name for the watermark (note this is



**Released: August 2009**

Copyright © 2009 A-PDF.com - all rights reserved



not the text that will appear in the pdf, it's used only in the list of available watermarks that you see on the Watermarks list and must be a unique name).

**Shape Type** – To set the Shape Watermark Type, including Lines watermark, Rectangle Watermark, Circle Watermark.

**Shape Watermark properties** - You can set the size(width or height) of the shape watermark, If the Fit to margins options is selected the size of the shape watermark will be automatically adjusted to fit in the limits of the page margins.

**Shape Watermark Effects** –you can choose a rotation angle if you want the shape to be rotated (Rotation, values accepted between 0 and 360) and set an Opacity value so that the shape is transparency (values from 0 to 100). 0 means invisible, 100 means visible solid. If the **As background** option is not checked, the shape watermark will be placed on top of the content that currently exists in the document, otherwise it will be placed under the existing content

**Shape layout** -You can place the shape to a fix position, **Position** and **Margin** helps you to adjust the position of Shape watermark. The margin can use either inch/millimeter or percent as unit.

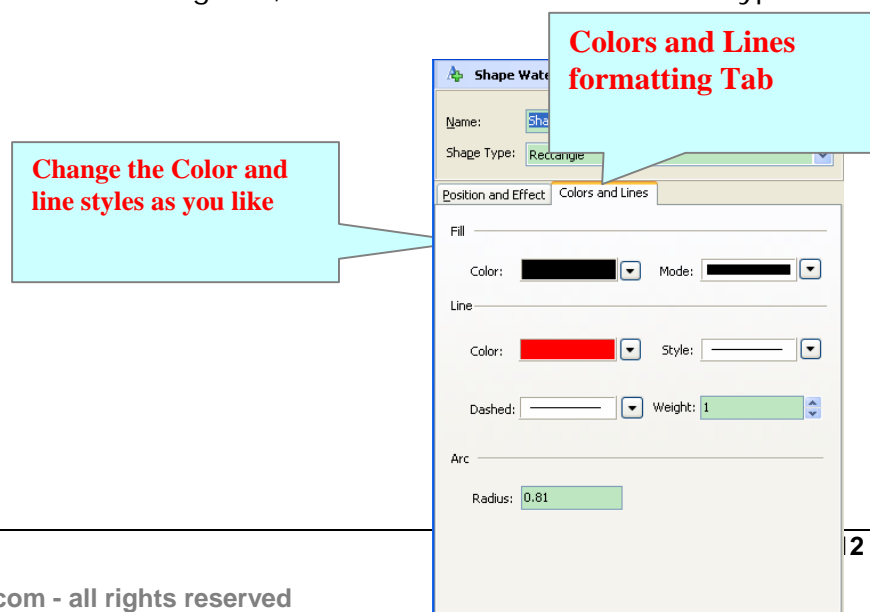
**Range:** Set pages to be added current watermarks on by selecting a predefined range. It applies to current watermark only

**Preview** - in this section you will be able to see how the shape watermark will be displayed in the PDF file.

**Link:** see description for text watermark link above


### Colors and Lines formatting Tab.

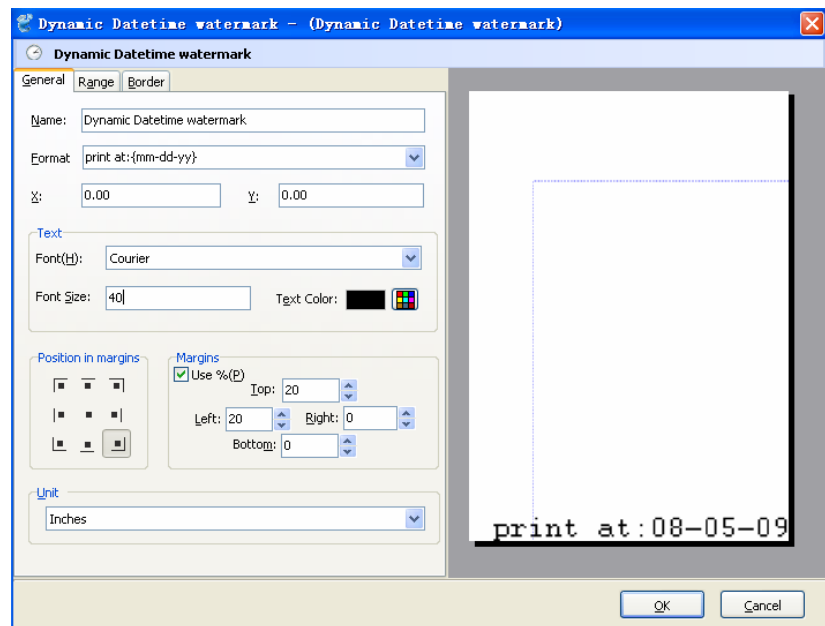
In the Format Color and Lines dialog box, select a new color and/or line type for the shape.





## Create Dynamic Datetime Watermark

In Watermark list window, click the icon  to open the **New Dynamic Datetime Watermark** configuration window. In here you can create a Dynamic Datetime watermark. With the Watermark, you can add the live date/time the document. Once you set the desired options for the Dynamic Datetime watermark, you can click OK to save it, Options that you can set:



**Name** - you can enter a name for the watermark.

**Format** - You can choose a Dynamic Date time format for watermark, such as {mm-dd-yy}, {mm-dd-yyyy}, {HH:MM} etc...

**X,Y** - The layout (X,Y position in the margin) for watermark

**Text** - You can select the type of the font (in the Font section), color and size of the Dynamic Datetime watermark.

**Margins** - Custom Position and dimensions for your Dynamic Datetime watermark (units for the dimensions are those selected in the Units drop-down includes inches, millimeters or points) and the Dynamic Datetime Text will be automatically adjusted as seen in the Preview section

**Range:** Set pages to be added current Dynamic Datetime watermarks on by selecting a predefined range. It applies to current watermark only

**Border:** In the Border Tab, You can select a fill color and/or border line type for the Dynamic Datetime watermark.

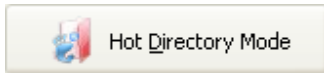


Now the shape watermark has been defined and saved, it will be shown in the **Watermarks list window**.

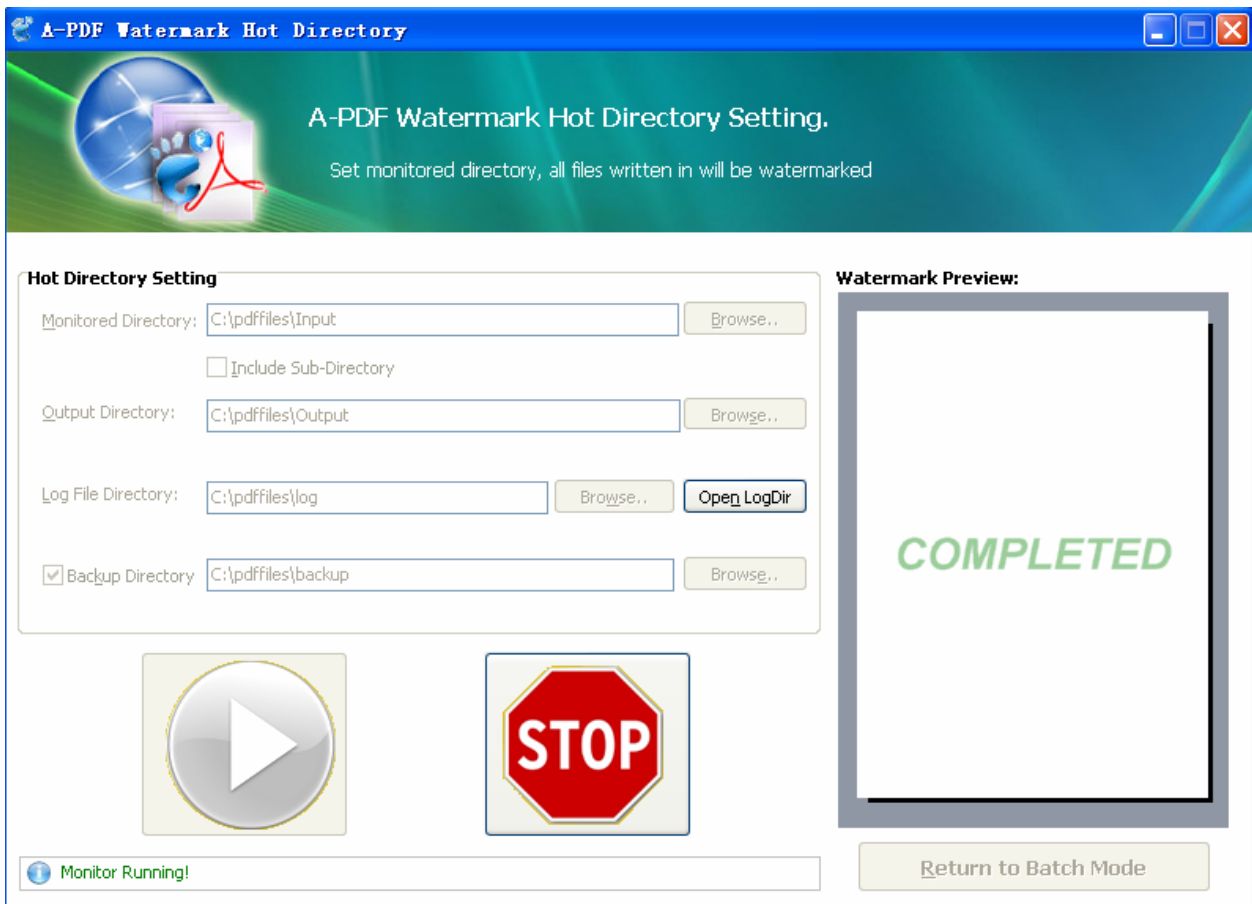
## Hot Directories Mode

You may want to monitor a directory in a server, when some one copying the PDF files in, the watermark will be added to PDF and sent to an output directory automatically.

In A-PDF Watermark main window, click the **Hot Directories Mode** button



, a Hot Directories Service window will be opened.



Hot Directory Setting:

- **Monitor Directory**, set the directory to monitor. Even **Include Sub-Directory**.
- **Output Directory**, set output directory where all of converted files will be sent to.



- **Log File Directory**, Log files will be saved in. Log files will record the detail of operation. Such as when to monitor, which file converted, if converting successfully or not.

After setting the directories, click **Start** button to start work, **Stop** button to stop monitoring hot directory.

### Open with hot directory mode

You can start the program with hot directory mode using the parameter /H.

Using /M can open with minimized window also.

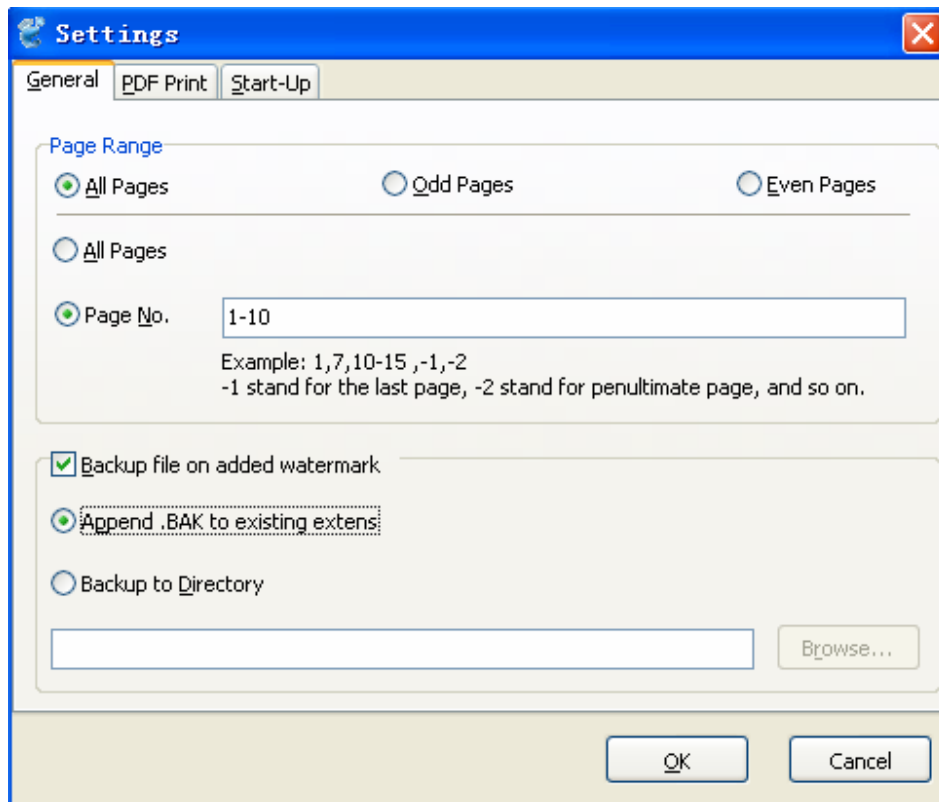


## Options

Set Watermark options: You can set create watermark output option by click the setting button icon.



### Setting-General



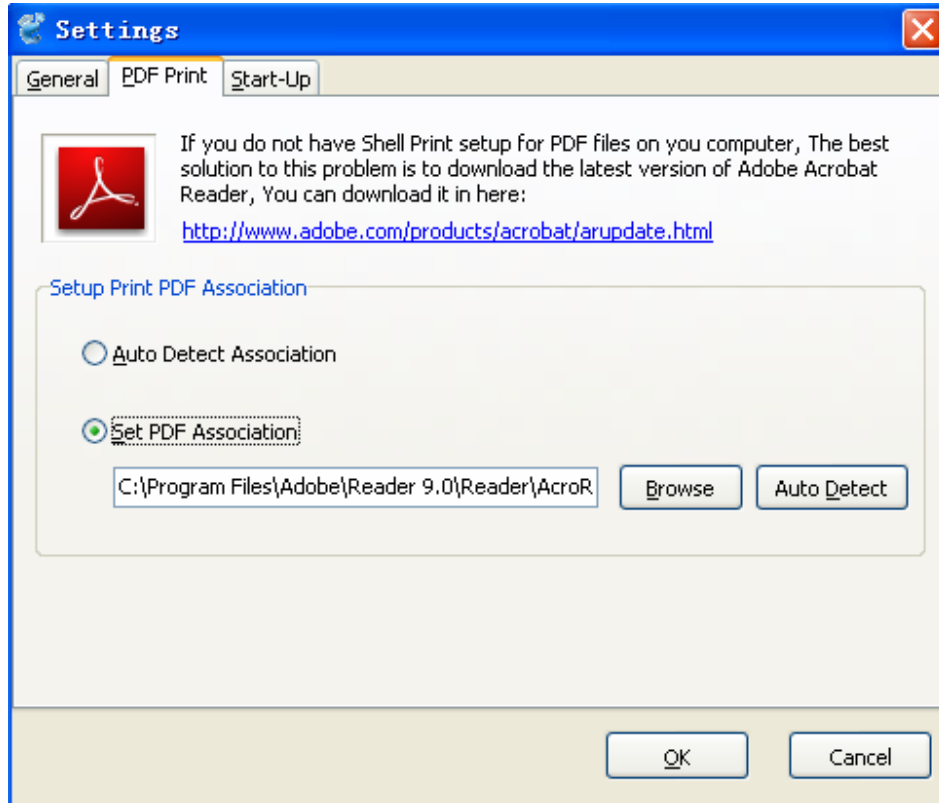
**Page Range:** A common option to set pages to be added watermarks on by selecting a predefined range. It applies to all watermarks

**Backup file on adding watermark:** While clicking the **Watermark** icon to create watermark on all of PDF files in the document windows, you can set the Backup Option to backup original PDFs





## Setting- Print PDF

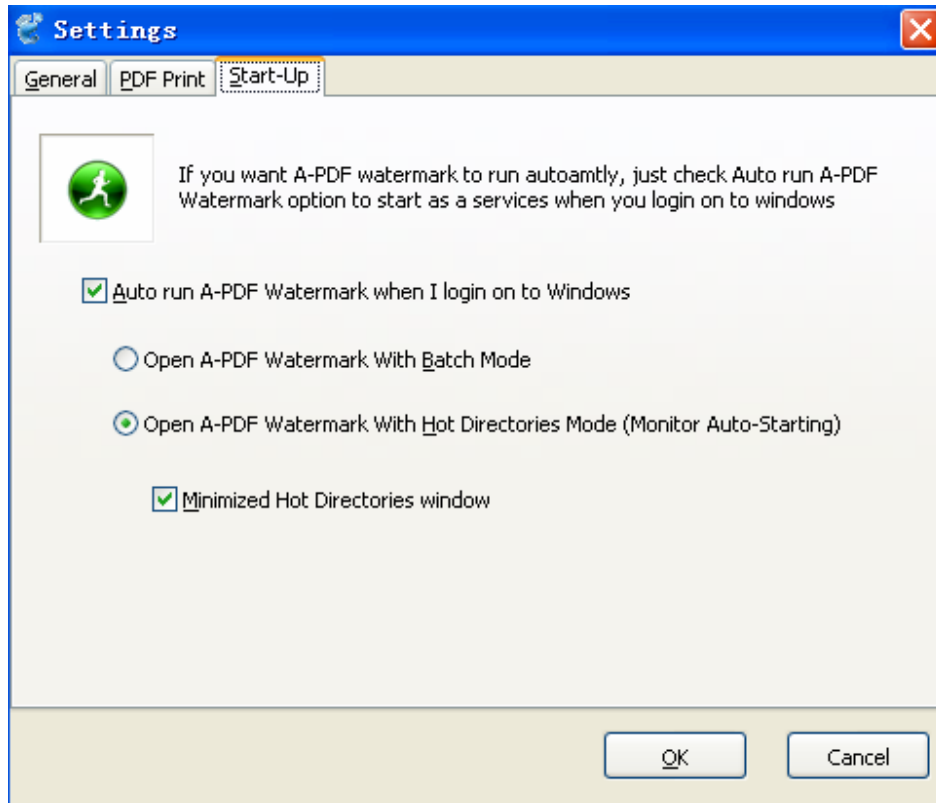


**PDF Print:** If you want to create a stamp\watermark only for printing, you should set PDF File Print association, A-PDF Watermark will print the output PDF with watermark to any Windows Printer Device using 'PDF File Print association' program and do not need to modify the original PDF document

The Print PDF option is to set shell print association for PDF documents, if you choice "Auto Detect Association", A-PDF Batch Print will print PDF by using shell default PDF application; if you choice "Set PDF Association", you can define shell print application for PDF by yourself



## Setting- Start Up



If you want A-PDF watermark to run automatly, just check Auto run A-PDF Watermark option to start it as a services when you login on to windows

## Ending Your Session

When you have completed your work, choose the **F**ile option and select **E**xit from the dropdown list.

For more information: <http://www.a-pdf.com>